



Ozen Air Filtration

OFLHG-H High Pressure
Compressed Air Filters



OFLHG-H Series High Pressure Compressed Air Filters

OFLHG-H (60-1750 scfm)



OFLHG-H series high pressure air filters provide high-quality air as required by high-pressure applications. The reinforced wall thickness used in the products ensures high pressure performance.

OFLHG series 725 psi

- It is made of aluminum.
- It is strong and durable with its weldless design.
- The inner and outer surfaces of the filters have anodic coating.
- Manual brass discharge.

OFLHG-H series 5075 psi

- It is made of carbon steel.
- It can be used safely in high pressure applications with its weldless design.
- The inner and outer surfaces of the filters are painted with epoxy electrostatic powder paint.
- Manual brass discharge.

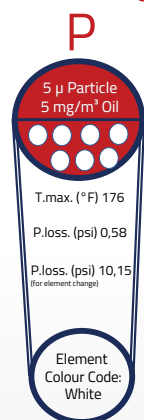


Technical Specifications

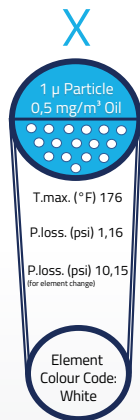
| Model | Capacity | Coupling Size | Max Working Pressure | Element Model | Housing Dimensions (inch) | | | | |
|--------------|----------|---------------|----------------------|---------------|---------------------------|------|------|-------|-------|
| | | | | | A | B | C | D | E |
| OFLHG 100 | 60 | 1/4" | 725 | OHGM-25 | 4.17 | 4.68 | 1.18 | 3.46 | 8.00 |
| OFLHG 300 | 175 | 1/2" | 725 | OHGM-50 | 4.17 | 4.68 | 1.18 | 3.46 | 8.00 |
| OFLHG 600 | 350 | 3/4" | 725 | OHGM-100 | 4.17 | 4.68 | 1.18 | 3.46 | 8.00 |
| OFLHG 850 | 500 | 1" | 725 | OHGM-150 | 4.84 | 5.51 | 1.55 | 4.00 | 14.00 |
| OFLHG 1200 | 700 | 1" | 725 | OHGM-200 | 4.84 | 5.51 | 1.55 | 4.00 | 14.00 |
| OFLHG 1600 | 950 | 1 1/2" | 725 | OHGM-250 | 4.84 | 5.51 | 1.55 | 4.00 | 14.00 |
| OFLHG 2500 | 1500 | 2" | 725 | OHGM-2500 | 6.25 | 7.00 | 2.20 | 5.23 | 15.00 |
| OFLHG 3000 | 1750 | 2 1/2" | 725 | OHGM-3000 | 6.25 | 7.00 | 2.20 | 5.23 | 15.00 |
| OFLHG-H 100 | 60 | 1/4" | 5075 | OHGM-25 | 4.46 | 4.54 | 1.01 | 6.10 | 1.50 |
| OFLHG-H 300 | 175 | 1/2" | 5075 | OHGM-50 | 4.46 | 4.54 | 1.01 | 6.24 | 1.50 |
| OFLHG-H 600 | 350 | 3/4" | 5075 | OHGM-100 | 4.30 | 4.54 | 1.26 | 8.14 | 2.00 |
| OFLHG-H 850 | 500 | 1" | 5075 | OHGM-150 | 5.23 | 5.43 | 1.47 | 9.84 | 2.00 |
| OFLHG-H 1200 | 700 | 1" | 5075 | OHGM-200 | 5.23 | 5.43 | 1.47 | 12.36 | 2.00 |
| OFLHG-H 1600 | 1317 | 1 1/2" | 5075 | OHGM-250 | 5.03 | 5.43 | 1.74 | 14.48 | 2.00 |
| OFLHG-H 2500 | 2058 | 2" | 5075 | OHGM-2500 | 5.70 | 6.22 | 2.02 | 15.47 | 2.00 |
| OFLHG-H 3000 | 2470 | 2 1/2" | 5075 | OHGM-3000 | 6.29 | 7.00 | 2.26 | 15.19 | 2.00 |

Filtering Specifications

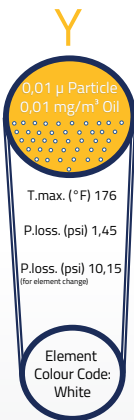
Pre Filtering



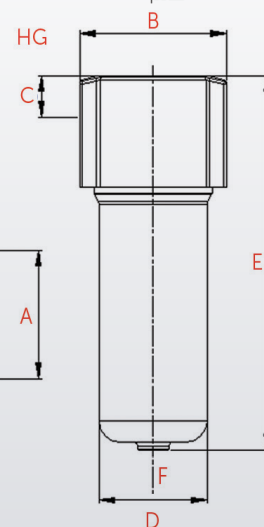
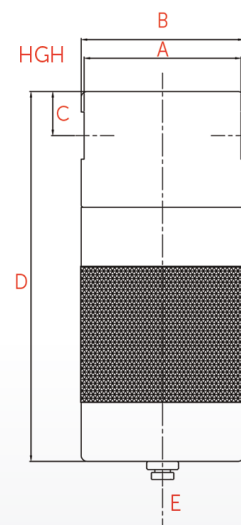
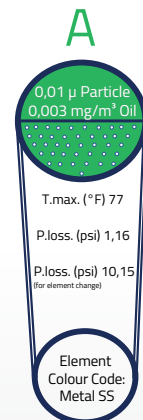
General Purpose



Oil Removal



Activated Carbon



Notes:

- 1) Grade A must not operate in oil saturated conditions.
- 2) Grade A elements should be replaced periodically to suit the applications but must be changed at least every six months.
- 3) Grade A will not remove certain gases including carbon monoxide and carbon dioxide. Please refer to works if in doubt.
- 4) All filters are suitable for use with mineral and synthetic oils.
- 5) Other standards for flanged connections are available.
- 6) Direction of air flow, inside to out, through filter element, except P & A filter.