

Reliable | Efficient | Innovative



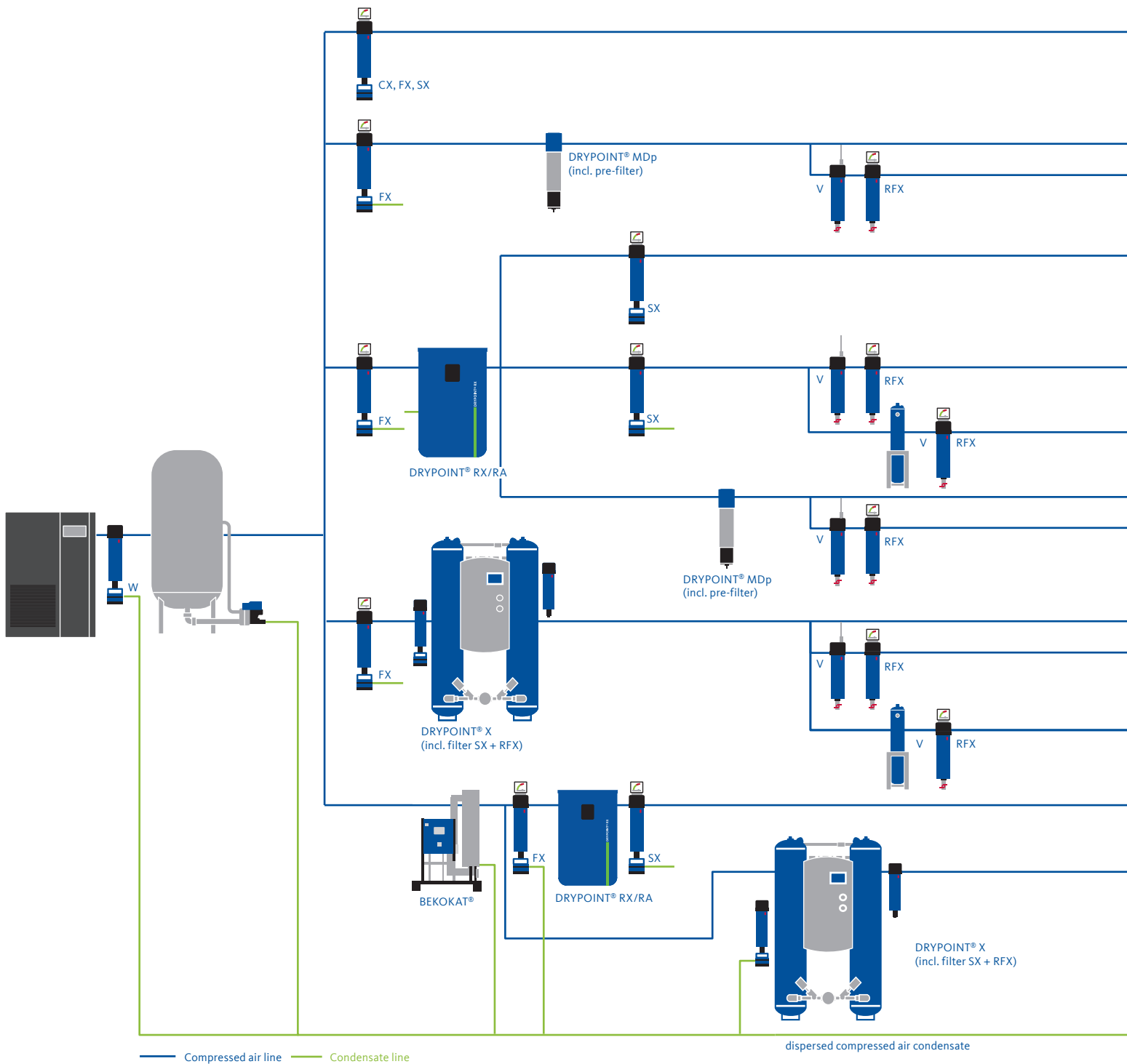
Product Portfolio

components and engineered systems for compressed air and gas treatment



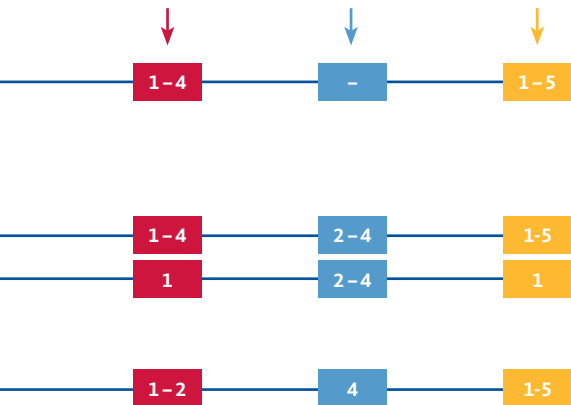
Truth in Compressed Air

Complete compressed air processing at a glance:



Your single source of supply and quality you can rely on.

Solid particles Pressure dew point Oil/oil vapor



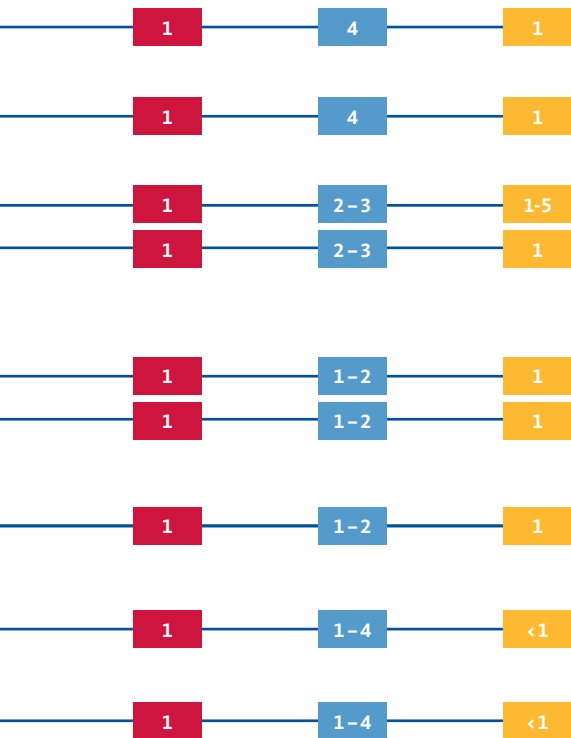
Air quality classes in accordance with ISO 8573-1:2010

Class	Solid particles, max. number of particles per m ³			Pressure dew point °F	Oil content (liquid, aerosol, oil vapor) mg/m ³
	0.1 μm < d ≤ 0.5 μm	0.5 μm < d ≤ 1.0 μm	1.0 μm < d ≤ 5.0 μm		
0	In accordance with the unit operator's or supplier's specifications, stricter requirements than class 1				
1	≤20,000	≤400	≤10	≤-94	≤0.01
2	≤400,000	≤6,000	≤100	≤-40	≤0.1
3	-	≤90,000	≤1,000	≤-4	≤1
4	-	-	≤10,000	≤37	≤5
5	-	-	≤100,000	≤45	>5
6	-	-	-	≤50	-

■ Measured in accordance with ISO 8573-4, ref. conditions 14.5 psi [a] absolute, 68 °F, 0% RH

■ Measured in accordance with ISO 8573-3

■ Measured in accordance with ISO 8573-2 and ISO 8573-5, ref. conditions 14.5 psi [a] absolute, 68 °F, 0% RH



	CLEARPOINT® dust filter RFX/RSX with manual drain with differential pressure indicator		DRYPOINT® RX/RA refrigeration dryer with BEKOMAT®
	CLEARPOINT® coalescence filter CX/FX/SX with BEKOMAT® with differential pressure indicator or filter management		DRYPOINT® MDp / MDi membrane dryer with an integrated nanofilter and adjustable PDP (MDi only)
	CLEARPOINT® A activated carbon filter Option: oil check indicator		DRYPOINT® MDe membrane dryer
	CLEARPOINT® V activated carbon cartridge with oil check indicator		DRYPOINT® X desiccant dryer with inlet and dust filter
	CLEARPOINT® V activated carbon adsorber		BEKOKAT® catalytic converter for oil and bacteria free air
	CLEARPOINT® W water separator with BEKOMAT®		BEKOMAT® intelligent zero air loss condensate drains
	QWIK-PURE® oil-water separation system for dispersed and emulsified condensates		



We set the standard. With our expertise, our experience, and our passion.

Prepared for the **future** by our past

For more than four decades, **BEKO** Technologies has been developing, manufacturing and selling high-quality, high-capacity and high-efficiency components and engineered systems for optimal compressed air and gas quality. Today, we offer a complete range of products for all tasks related to compressed air and gas engineering, transportation, and processing.

Judge us by our **service and support**

For us, the best measure of all the things we do is the satisfaction of our customers. Your experience and requirements are the impulses that drive our innovations. Therefore, our constant readiness to enter into dialog and business partnership is very important to us. Our worldwide network of subsidiaries and experienced distributors ensure close and individualized customer support in all markets.

What counts for us is **confidence**

Reliability and honesty are the basis of a true partnership and requirements in achieving a shared vision. As an independent company, **BEKO** Technologies stands for freedom of decision, professionalism, and consistency. We are focused on the concerns of our customers and partners, and are completely committed to achieving success together.

Definitive quality products, cost effective, and innovative

Constantly evolving employment conditions and legal requirements create new and increased demands on compressed air and gas technology. **BEKO** Technologies transforms these requirements into successful and practical products and system solutions. Thanks to this expertise, we are recognized worldwide as a major innovator in our sector.

CLEARPOINT®

Filtration and Separation

The CLEARPOINT® filter technology guarantees low operating costs, long service life, outstanding process reliability, and the safe filtration of aerosols, oil and particles. This comprehensive range of products covers a performance spectrum from 25 to 21,000 scfm and includes threaded and flanged filters, as well as high-pressure filters up to 7,250 psig. With our innovative filter elements and flow optimized, corrosion protected housing construction, CLEARPOINT® offers safe and reliable filtration and qualitatively better compressed air at significantly reduced operating costs.

CLEARPOINT® Coalescing and Particulate Filters
with float drain or BEKOMAT® with or without differential pressure gauge

CLEARPOINT® Water Separators
with float drain or BEKOMAT®

CLEARPOINT® Activated Carbon Filters
oil vapor removal filters or towers with cartridge or activated carbon fill

Filtration and separation done the energy-efficient way

CLEARPOINT® key features:

- › High-performance filtration; better compressed air quality and significantly reduced operating costs
- › Improved separation efficiency
- › High dirt and particulate absorption capacity
- › Super-low differential pressure
- › Performance optimized volume flow increase by up to 30%



CLEARPOINT®	Flow	Pressure
Threaded Series	25 to 1,900 scfm	up to 232 psig
Flanged Series	1,900 to 21,000 scfm	up to 232 psig
PN50 High Pressure Series	100 to 2,750 scfm	up to 725 psig
HP High Pressure Series	25 to 2,000 scfm	from 1,450 up to 7,250 psig
H In-line Heater Series	30 to 60 scfm	up to 232 psig

DRYPOINT® RX/RA and RA Eco Series

Refrigerant Drying

The operating costs - and not the investment costs - determine the cost efficiency of refrigeration dryers. Using DRYPOINT® RX/RA these crucial operating costs can be reduced by half over a 5-year period. The non-cycling DRYPOINT® RX/RA line is available in two different series to satisfy every level of required performance.

DRYPOINT® RAc Economy Refrigeration Dryers
economically priced with BEKOMAT® or timer drain in a compact frame

DRYPOINT® RAx Premium Refrigeration Dryers
equipped with all premium features including BEKOMAT® as standard

DRYPOINT® RX Premium Refrigeration Dryers
equipped with all premium features including BEKOMAT® as standard

Efficiency pays off

DRYPOINT® RX/RA key features:

- › Includes the patented Vario Flow hot gas by-pass valve
- › Compact design with low internal vibration
- › High efficiency heat exchanger for inlet temperatures up to 160 °F
- › BEKOMAT® inside

The DRYPOINT® RA Eco series takes all of the best features from the standard RA series and combines them with innovative cycling and variable speed technology resulting in even greater operational cost savings. Specifically with the Eco Series dryers, users are provided with maximum energy savings from the cycling and variable speed technologies used.

DRYPOINT® RA CT Series Refrigeration Dryers
ultra efficient dryers with cycling technology and standard BEKOMAT®

DRYPOINT® RA VSD Series Refrigeration Dryers
ultra efficient dryers with variable speed technology and standard BEKOMAT®

Maximum efficiency combined with cycling technology

DRYPOINT® RA Eco Series key features:

- › All new, ground-up controller design
- › Includes the patented Vario Flow hot gas by-pass valve
- › Oversized heat exchanger with flow optimized profile
- › BEKOMAT® inside
- › Maximum energy savings through advanced cycling and variable speed technology



DRYPOINT® RA Non-cycling	Flow	Pressure
DRYPOINT® RAc	10 to 480 scfm	up to 232 psig
DRYPOINT® RAx	20 to 10,000 scfm	up to 232 psig

DRYPOINT® RA Eco Series	Flow	Pressure
DRYPOINT® RA CT	20 to 500 scfm	up to 232 psig
DRYPOINT® RA VSD	800 to 6,000 scfm	up to 200 psig

DRYPOINT® RA HT and RS HP

Refrigerant Drying

DRYPOINT® RA HT high temperature refrigerant air dryers are specifically designed to handle the extreme demand of inlet compressed air temperatures up to 210 °F. This level of performance is only possible with the integrated after cooler and filter combination found within the DRYPOINT® RA HT series dryers.

DRYPOINT® RA HT High Inlet Temperature Refrigeration Dryers
with integrated aftercooler and BEKOMAT® or timer drain

With full counter flow heat exchangers of either copper tube-in-tube or stainless steel / copper brazed plate designs, the DRYPOINT® RS HP is capable of handling compressed air pressures up to 725 psig all while maintaining a tight outlet pressure dew point tolerance for maximum performance and reliability.

DRYPOINT® RS HP High Pressure Refrigeration Dryers
stainless steel heat exchanger with BEKOMAT® or timer drain

Minimal pressure drop, low operating costs

DRYPOINT® RA HT key features:

- › Significantly reduced operating costs
- › High operational reliability
- › Includes the patented Vario Flow hot gas by-pass valve
- › BEKOMAT® inside
- › Integrated after cooler complete with pre-filtration

Refrigerant drying for high pressure systems

DRYPOINT® RS HP key features:

- › Additional stainless steel componentry
- › Very long service life
- › Advanced controller
- › High pressure rated BEKOMAT® inside
- › Easy handling and installation
- › Available in 17 different model sizes



DRYPOINT® RA HT	Flow	Pressure
Performance Range	20 to 350 scfm	up to 200 psig



DRYPOINT® RS HP	Flow	Pressure
Performance Range	15 to 3,500 scfm	up to 725 psig

DRYPOINT® XC and AC HP

Heatless Desiccant Drying

DRYPOINT® XC desiccant dryers are specifically designed to minimize air loss. With this design, air loss and back pressure are reduced resulting in an operationally efficient dryer. This feature rich line results in a dramatically quick economic payback period.

DRYPOINT® ACC Compact Heatless Desiccant Dryers
with pre-filtration included and post-filter integrated

DRYPOINT® XCe Economy Heatless Desiccant Dryers
with basic controller and slanted seat valves

DRYPOINT® XCp Premium Heatless Desiccant Dryers
with standard humidity demand control and BEKOTOUCH interface

The DRYPOINT® AC HP desiccant dryer reliably removes humidity from the highest pressure compressed air systems. DRYPOINT® AC HP units are individually engineered, adjusted, and manufactured for the application and customer requirements providing maximum performance efficiency.

DRYPOINT® AC HP Heatless High Pressure Desiccant Dryers
full stainless steel components with PLC controller

Minimal pressure drop, maximum savings

DRYPOINT® XC key features:

- › Significantly reduced operating costs
- › High operational reliability
- › Electronic control offers operational flexibility
- › Designed with the user in mind - easy install and simple maintenance

Drying under high pressure

DRYPOINT® AC HP key features:

- › Full stainless steel construction
- › Leak free connections
- › Intelligent, expandable PLC controller
- › Trouble-free and easy to maintain
- › Freeze-free purge air
- › Sized and engineered specifically for your application



DRYPOINT® XC	Flow	Pressure
DRYPOINT® ACC	4 to 110 scfm	up to 232 psig
DRYPOINT® XCe	80 to 800 scfm	up to 150 psig
DRYPOINT® XCp	80 to 2,800 scfm	up to 150 psig

DRYPOINT® AC HP	Flow	Pressure
Performance Range	35 to 480 scfm	up to 7,250 psig

DRYPOINT® XF and XH

Heated Desiccant Drying

When a true system solution that delivers absolute maximum performance in all areas is required then DRYPOINT® XF is that solution. Heated, external blower operated desiccant dryers are at the top of the range in terms of product longevity, reliability and total energy savings.

DRYPOINT® XFe Economy Heated Blower Desiccant Dryers
with high performance valves and BEKOTOUCH 2 interface

DRYPOINT® XFi ecoIntelligent Heated Blower Desiccant Dryers
0-3% purge rate using auto-adjusting software and BEKOTOUCH 2 interface

External heated purge desiccant dryers provide the next level up in terms of energy savings when compared to heatless designs, and the DRYPOINT® ACH is no exception. The entire design from valves to controller were given careful consideration to save you money and improve operational reliability.

DRYPOINT® XH Heated Purge Desiccant Dryers
with standard PLC controller

When maximum efficiency is your goal

DRYPOINT® XF key features:

- › Auto-purge rate and user modes
- › Advanced, auto-adjusting ecoIntelligent PLC
- › Up to 90% energy savings compared with a conventional dryer
- › Available with or without tower insulation
- › Demand specific sizing and engineered to your exact specifications

Optimized heated drying systems

DRYPOINT® XH key features:

- › Purge efficient design
- › Fully programmable PLC
- › Standard cycle failure alarm
- › Available with or without tower insulation
- › Demand specific sizing and engineered to your exact specifications



DRYPOINT® XF	Flow	Pressure
DRYPOINT® XFe	800 to 6,000 scfm	up to 150 psig
DRYPOINT® XFi	800 to 6,000 scfm	up to 150 psig

DRYPOINT® ACH	Flow	Pressure
DRYPOINT® XHe	100 - 3,200 scfm	up to 150 psig
DRYPOINT® XHi	100 - 3,200 scfm	up to 150 psig

DRYPOINT® MDe, MDp, and MDi

Membrane Drying

The DRYPOINT® MD is a super compact membrane air dryer that dries compressed air or gas stream down to the required dew point while self-adjusting to the ambient conditions. Along with filtration, compressed air drying contributes significantly to the enhancement of process reliability. The DRYPOINT® MD range is available without filtration as with the standard series, with an integrated pre-filter in the DRYPOINT® MDp series, and in the super energy saving, user adjustable MDi configuration. Being that the technology is 100% engineered and produced by BEKO Technologies means that we can handle your project through the entire project life cycle - from concept to prototyping, from benchmarking to serialized production, we have the optimal solution.

DRYPOINT® MDe Economy Series Membrane Dryers
standard membrane air dryer with tubular or filter style housing

DRYPOINT® MDp Premium Series Membrane Dryers
membrane air dryer with integrated pre-filter

DRYPOINT® FDR Membrane Dryers
pre-configured filter, dryer and pressure regulator packages

DRYPOINT® MDi ecoIntelligent Series Membrane Dryers
membrane air dryer with adjustable pressure dew point control

A solution for every application

DRYPOINT® MD key features:

- › Reliable compressed air drying with low purge air demands
- › Zero electrical consumption, no desiccant, no moving parts, and no maintenance
- › TWIST 45 technology for high efficiency drying
- › No change in the compressed air composition or temperature
- › Optimum filtration included directly upstream of DRYPOINT® MDp
- › DRYPOINT® MDi with ecoIntelligent controller



DRYPOINT® MD	Flow	Pressure
DRYPOINT® MDe	2 to 130 scfm	up to 140 psig
DRYPOINT® MDp	2 to 130 scfm	up to 140 psig
DRYPOINT® MDi	12 to 130 scfm	up to 145 psig
DRYPOINT® FDR	2 to 17	up to 140 psig

METPOINT®

Measurement Technology

In the field of compressed air, specialized measurement technology provides the database used for the successful assessment and assurance of compressed air quality. Continuous monitoring of compressed air parameters offers process safety and the reliable identification of hidden expenses that are driving up costs unnecessarily. Possible overloading (i.e. excessive air velocities) or malfunctions can be detected quickly and reliably and this allows for the most economical optimization of plant components. Moreover, the exact consumption percentages at different stages of production is of great value in making fact-based business management decisions. The complete METPOINT® line of monitors, data loggers and sensors let you handle these tasks with ease:

METPOINT® Instrumentation Monitors

data logging, touch screen display, and multiple sensor connections

METPOINT® Compressed Air Sensors

available for dew point, flow, pressure, leak detection, temperature, and amperage

A synergistic effect

METPOINT® key features:

- › Highly accurate instruments designed for compressed air
- › Reliable measurements that are independent
- › Multi-function displays that are easy to use
- › Completely modular system that expands as needed
- › Maximum flexibility with stationary and portable devices
- › No adjustments necessary



METPOINT®	Flow	Pressure
Monitors	No Restriction	No Restriction
Sensors	No Restriction	up to 725 psig

METPOINT® OCV

Hydrocarbon Measurement Technology

At many points in the processing of compressed air, there is the risk of contamination with hydrocarbons, particularly oil. In oil flooded compressors, oil vapor enters the compressed air system as a result of the compression process. Further contamination can occur where oil and grease are employed as lubricants and sealing compounds. Even oil-free compressors are no guarantee for oil-free compressed air, since oil vapor already exists in the air that is drawn into the compressor at the intake. Wherever contaminants may enter a production process, then the company needs to be sure that accurate monitoring is in place to detect even the smallest trace of contamination. The METPOINT® OCV and OCV compact completely takes over the requirement to constantly monitor your compressed air and performs this task to an accuracy of 0.003 mg/m³. The system ensures that you have contamination-free processes and therefore contamination-free products.

METPOINT® OCV Compact Oil Vapor Monitoring Systems
inline oil vapor measurement device with integrated display

Two devices in one

METPOINT® OCV key features:

- › Worldwide exclusive technology
- › Exceeds ISO 8573-1 Class 1 standards
- › Self-adjusting reference air sample
- › Simplified calibration process eliminates downtime
- › Network ready with data logging and remote access
- › Easy to use and understand display



METPOINT® OCV Compact	Flow	Pressure
Performance Range	No Restriction	up to 232 psig

BEKOKAT®

Oil-free Process Technology

The main source for oil in compressed air is the compressor: some of the compressor oil from oil-lubricated machines always enters the compressed air stream. In order to prevent this, the installation of compressors with oil-free compression is often favored. This is a false sense of security! This compression method prevents additional lubricating oil from entering the compressed air, but, this is by no means a guarantee that the compressed air is free from oil. Hydrocarbons in the ambient air are the reason for this. Hence, compressed air of the highest quality according to ISO 8573-1 can only be guaranteed with oil-free compression combined with supplementary processing. The BEKOKAT® offers an ideal system solution for this! In a single process step, the BEKOKAT® breaks down hydrocarbons inside the compressed air stream. The residual oil content significantly outperforms the requirements of Class 1 according to ISO 8573-1 - proven and certified!

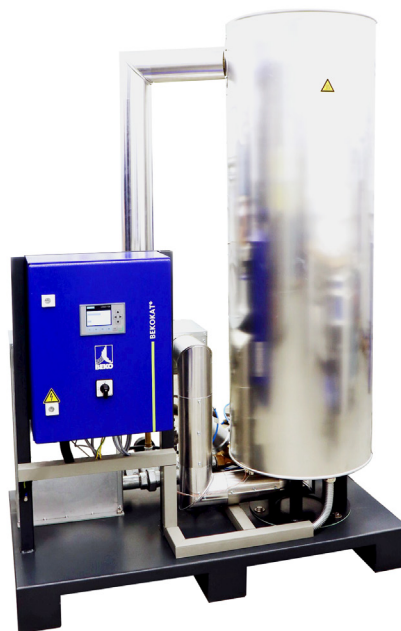
BEKOKAT® Catalytic Conversion Systems

complete oil and bacteria removal systems for compressed air

Trendsetting catalysis technology

BEKOKAT® key features:

- › Oil-free and sterile compressed air that is better than ISO 8573-1 Class 1 oil content standard
- › Independent of ambient temperature, air humidity and oil inlet concentration
- › Clean and environmentally friendly
- › Partial-load operation is possible
- › Minimal maintenance with long service intervals



BEKOKAT®	Flow	Pressure
BEKOKAT® iCC 010	10 scfm	160 psig
BEKOKAT® iCC 035 - iCC 425	35 to 425 scfm	232 psig
BEKOKAT® iCC 705	705 scfm	160 psig

BEKOMAT®

Condensate Drainage

Generating compressed air always involves the formation of liquid condensate which, in most cases, contains oil. It is also contaminated with dirt particles which, if not removed, will disperse throughout an entire compressed air network. This is a very common problem and often results in elevated costs, damage and downtime. Using an electronically level-controlled BEKOMAT® the condensate in the compressed air system is drained automatically. The intelligent electronics prevent compressed air losses and minimize the energy input required. The return-of-investment installing a BEKOMAT® solution is usually less than 6-months.

BEKOMAT® Standard Condensate Drains
for standard pressure applications

BEKOMAT® PN and E Condensate Drains
for high pressure systems and available in stainless steel

BEKOMAT® CV and NLV Condensate Drains
for centrifugal compressors with check valve or no-load valve

BEKOMAT® Specialty Condensate Drains
for low pressure, vacuum systems, large volumes, or explosive atmospheres

Process-safe, reliable and efficient

BEKOMAT® key features:

- › Unique sensor detects all kinds of condensate
- › High dirt resistance
- › Low maintenance
- › Fully automatic monitoring
- › Saves energy, costs and lowers CO₂ emissions
- › Extensive portfolio of custom equipment for special applications



BEKOMAT®	Flow	Pressure
BEKOMAT® Standard Series	100 to 50,000 scfm	from 12 up to 232 psig
BEKOMAT® PN and E Series	280 to 50,000 scfm	from 12 up to 912 psig
BEKOMAT® CV and NLV Series	2,000 to 50,000 scfm	from 0 up to 360 psig
BEKOMAT® Specialty Series	4,500 to 50,000+ scfm	from 1.45 psia up to 232 psig

QWIK-PURE®

Condensate Processing

Located directly at the source, oil-water separation is a more cost-effective solution for environmentally compatible condensate management than centralized treatment. The QWIK-PURE® and ÖWAMAT® oil-water separators do not generate any energy costs, boast enormous filter service lives and can be retrofitted without problems in older facilities.

QWIK-PURE® High-Efficiency Oil-Water Separators with direct to cartridge filtration

Sustainability with a savings potential

QWIK-PURE® key features:

- › Processed condensate can be directly introduced into the sewer system as treated wastewater
- › Patented quick disconnect cartridges combined with a lightweight filling material make installation and service simple, flexible, and clean.
- › Future-proof, easily expandable and can accommodate up to 3,300 scfm in a compact space.
- › No permit required according to most local laws on water quality
- › No energy costs under normal conditions



QWIK-PURE® ÖWAMAT®	Flow	Suitable Lubricant Types
QWIK-PURE®	45 to 7,200 scfm	All - including Polyglycol lubricants

What do you know about compressed air?

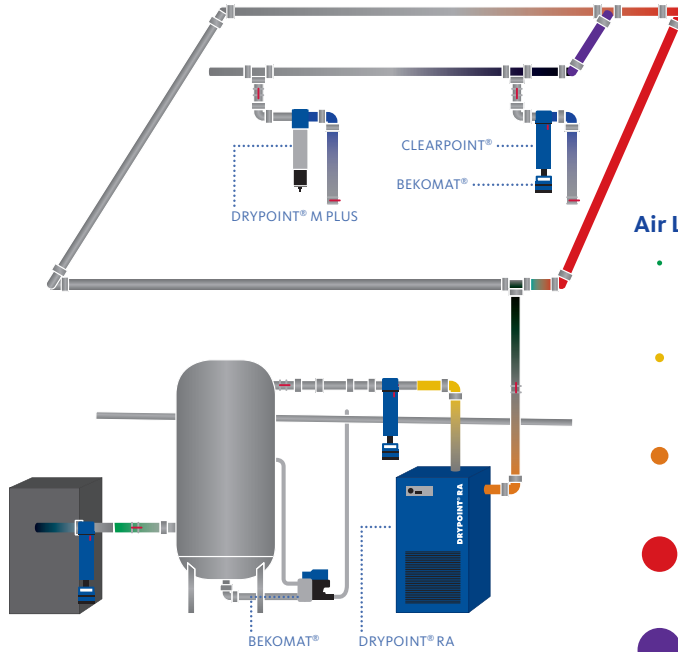
Pressure Drop

Compressor Pressure 110 psig
Point-of-use Pressure 85 psig

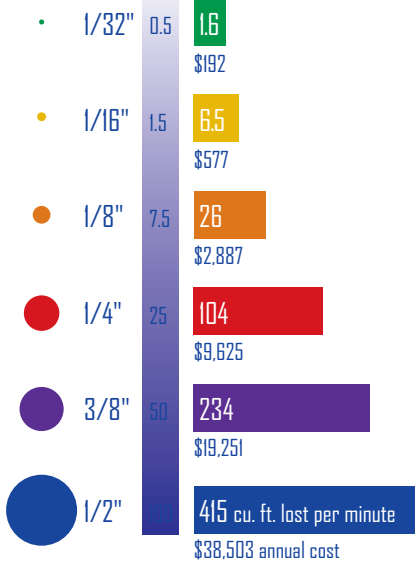
How does this happen?

9%	10 psi	Compressor Controls
10%	1.0 psi	Main Pipe Work
10%	1.0 psi	Water Separator
10%	1.0 psi	Coalescing Filter
20%	2.0-8.0 psi	Air Dryer
5%	0.5 psi	Distribution Pipe Work
5%	0.5 psi	Connecting Lines
33%	5.0-8.0 psi	Point-of-use Connections

With 110 psig at the compressor, it is easy to lose up to 25 psi by the time the air is consumed. Each system component is crucial to the efficiency of the whole system.



Air Leaks



Annual cost based on 8,000 operating hours, power cost at \$0.06 kWh and motor efficiency of 93%.

$$\text{Annual cost} = (\text{BHP}) \times (.746) \times (\text{Hrs/Yr}) \times (\$/\text{kWh}) / \text{Motor Efficiency}$$

Condensate Drain Air Loss

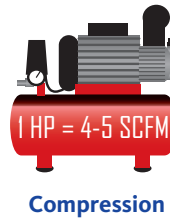
\$10,000 - ∞	Cracked Ball Valve
\$800 - \$1,000	Pneumatic Ball Valve w/ Bleeding Nozzle
\$300 - \$400	Timer Solenoid
\$0	BEKOMAT® Zero Air Loss Drain



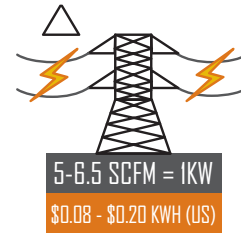
Condensate drain air loss is calculated using the same formula as air leaks.

Facts and Figures About Compressed Air

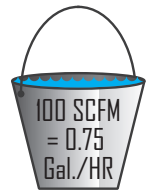
1,000 SCFM of Air Generation	\$0.30 - \$0.60
1,000 SCFM of Drying	\$0.03 - \$0.20



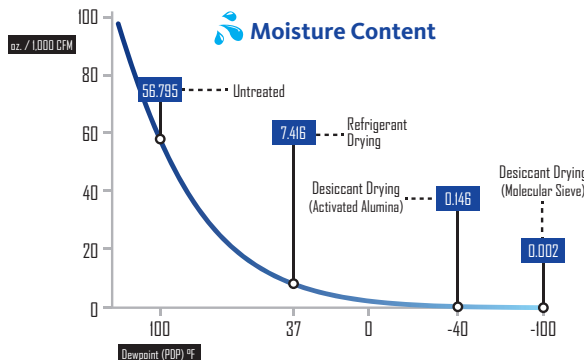
Compression



Electricity



Condensate



PPM	Hours	Compressor Horsepower			
		25	50	100	200
2	4,000	0.5	1.0	2.4	4.8
4		1.0	2.4	4.8	9.6
6		1.4	3.6	7.2	14.4
8		1.9	4.8	9.6	19.2



BEKO TECHNOLOGIES CORP.
900 Great Southwest Pkwy SW
Atlanta, GA 30336
USA
Phone +1 (404) 924-6900
www.bekousa.com

